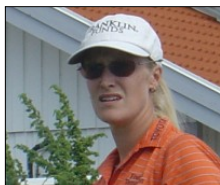


Janice Moodie



Representerar Skottland (SCO)
Född
Status Proffs
Huvudtour
SGT-spelare Nej

Aktuellt

Janice Moodie har inte startat säsongen.

Karriären

Janice Moodie har följande facit så här långt i karriären:
2 segrar på 344 tävlingar. För att vinna dessa 2 tävlingar har det krävts en snittscore om 68,00 slag, eller totalt -25 mot par. I snitt per vunnen tävling gick Janice Moodie -12,50 i förhållande mot par. Segrarna har varit värda 3 371 625 kr.
Härutöver har det också blivit:
- 5 andraplatser.
- 5 tredjeplatser.
- 41 övriga topp-10-placeringar
- 49 placeringar inom 11-20
- 154 övriga placeringar på rätt sida kvalgränsen
- 87 missade kval
Med 256 klarade kval på 343 starter är kvalprocenten sålunda 75.
Sammantaget har Janice Moodie en snittscore om 72,20 slag, eller totalt 429 mot par.

Ranking 2019

Totala prispengar 1997-2019

(officiella prispengar på SGT och världstourerna)

År	Tävl	Summa kronor	Största prischeck	Snitt per tävling
1997	3	64 540	57 951	21 513
1998	25	1 692 415	397 500	67 697
1999	30	4 391 254	576 347	146 375
2000	29	4 922 622	1 468 500	169 746
2001	29	7 159 060	980 000	246 864
2002	25	4 193 297	1 903 125	167 732
2003	27	1 889 541	254 500	69 983
2004	25	1 783 354	248 715	71 334
2005	24	1 618 708	278 312	67 446
2006	10	698 523	376 028	69 852
2007	24	1 406 091	316 528	58 587
2008	26	1 337 761	142 414	51 452
2009	21	1 555 248	414 496	74 059
2010	21	878 803	281 877	41 848
2011	8	92 686	41 755	11 586
2012	16	132 043	76 179	8 253
2013	1	0	0	0
Totalt		33 815 945		

Bästa placeringarna

• Segrar (2 st)

Asahi Ryokuken International

2002 (LPGA Tour)

Mount Vintage, USA

Shop Rite LPGA Classic

2000 (LPGA Tour)

Marriott Seaview Resort, USA

• Andraplatser (5 st)

Nabisco Championship

2001 (LPGA Tour)

Mission Hills, USA

WPGA International Matchplay

2001 (Ladies European Tour)

PGA Centenary Course, SCO

Los Angeles Women's Championship

2000 (LPGA Tour)

Wood Ranch, USA

Australian Ladies Masters

1999 (LPGA Tour)

Goldcoast Queensland, AUS

State Farm Rail Classic

1999 (LPGA Tour)

Springfield, USA

• Tredjeplatser (5 st)

Weetabix Women's British Open

2001 (Ladies European Tour)

Sunningdale, ENG

TYCO/ADT LPGA Tour Champoinship

2001 (LPGA Tour)

Trump International, USA

LPGA Takefujii Classic

2000 (LPGA Tour)

Kona, JPN

McDonalds WPGA Championship

1999 (Ladies European Tour)

Gleneagles, SCO

Standard Register Ping

1999 (LPGA Tour)

Moon Valley, USA

Majors

2	Nabisco Championship 2001 (LPGA Tour) Mission Hills, USA	21	Kraft Nabisco Championship 2002 (LPGA Tour) Mission Hills, USA	39	U.S. Womens Open Championship 2007 (LPGA Tour) Pine Needles, USA
3	Weetabix Women's British Open 2001 (Ladies European Tour) Sunningdale, ENG	21	McDonald's LPGA Championship 1998 (LPGA Tour) DuPont Country Club, USA	39	Kraft Nabisco Championship 2005 (LPGA Tour) Mission Hills, USA
7	U.S. Women's Open Championship 2002 (LPGA Tour) Prairie Dunes, USA	23	McDonald's LPGA Championship 2000 (LPGA Tour) DuPont Country Club, USA	43	McDonald's LPGA Championship 1999 (LPGA Tour) DuPont Country Club, USA
7	Nabisco Dinah Shore 1999 (LPGA Tour) Mission Hills, USA	23	du Maurier Ltd Classic 1999 (LPGA Tour) Priddis Greens, USA	45	RICOH Women's British Open 2008 (LPGA Tour) Sunningdale Golf Club, ENG
15	Nabisco Championship 2000 (LPGA Tour) Mission Hills, USA	26	U.S. Women's Open Championship 2001 (LPGA Tour) Pine Needles, USA	45	Kraft Nabisco Championship 2006 (LPGA Tour) Mission Hills, USA
17	US Women's Open 2000 (LPGA Tour) Merit Club, USA	30	McDonald's LPGA Championship 2004 (LPGA Tour) DuPont Country Club, USA	54	RICOH WOMEN'S BRITISH OPEN 2011 (Ladies European Tour) Carnoustie Golf Club, SCO
19	Kraft Nabisco Championship 2008 (LPGA Tour) Mission Hills, USA	33	McDonald's LPGA Championship 2005 (LPGA Tour) Bulle Rock, USA	55	RICOH Women's British Open 2010 (Ladies European Tour) Royal Birkdale Golf Club, ENG

forts. ->

Janice Moodie

• Majors (forts.)

- | | | | | | |
|----|---|----|--|----|--|
| 60 | Weetabix Women's British Open
2004 (Ladies European Tour)
Sunningdale, ENG | MC | Ricoh Women's British Open
2009 (Ladies European Tour)
Royal Lytham and St.Annes, ENG | MC | U.S. Women's Open Championship
2003 (LPGA Tour)
Pumpkin Ridge, USA |
| 62 | Kraft Nabisco Championship
2004 (LPGA Tour)
Mission Hills, USA | MC | Weetabix Womens British Open
2007 (Ladies European Tour)
Old Course St Andrews, SCO | MC | McDonald's LPGA Championship
2003 (LPGA Tour)
DuPont Country Club, USA |
| 64 | U.S. Women's Open
2008 (LPGA Tour)
Interlachen, USA | MC | McDonalds LPGA Championship
2007 (LPGA Tour)
Bulle Rock, USA | MC | Weetabix Women's British Open
2002 (Ladies European Tour)
Turnberry, SCO |
| 64 | Kraft Nabisco Championship
2003 (LPGA Tour)
Mission Hills, USA | MC | Kraft Nabisco Championship
2007 (LPGA Tour)
Mission Hills, USA | MC | McDonald's LPGA Championship
2002 (LPGA Tour)
DuPont Country Club, USA |
| 66 | McDonald's LPGA Championship
2001 (LPGA Tour)
DuPont Country Club, USA | MC | Weetabix Women's British Open
2005 (Ladies European Tour)
Royal Birkdale, ENG | MC | US Women's Open
1999 (LPGA Tour)
Old Waverly, USA |
| MC | Wegmans LPGA Championship
2003 (LPGA Tour)
Locust Hill Country Club GC, USA | MC | U.S. Women's Open Championship
2004 (LPGA Tour)
Orchards, USA | MC | du Maurier Ltd Classic
1998 (LPGA Tour)
Essex, USA |
| MC | Kraft Nabisco Championship
2012 (LPGA Tour)
Mission Hills Country Club, USA | MC | Weetabix Women's British Open
2003 (Ladies European Tour)
Royal Lytham & St Annes, ENG | | |